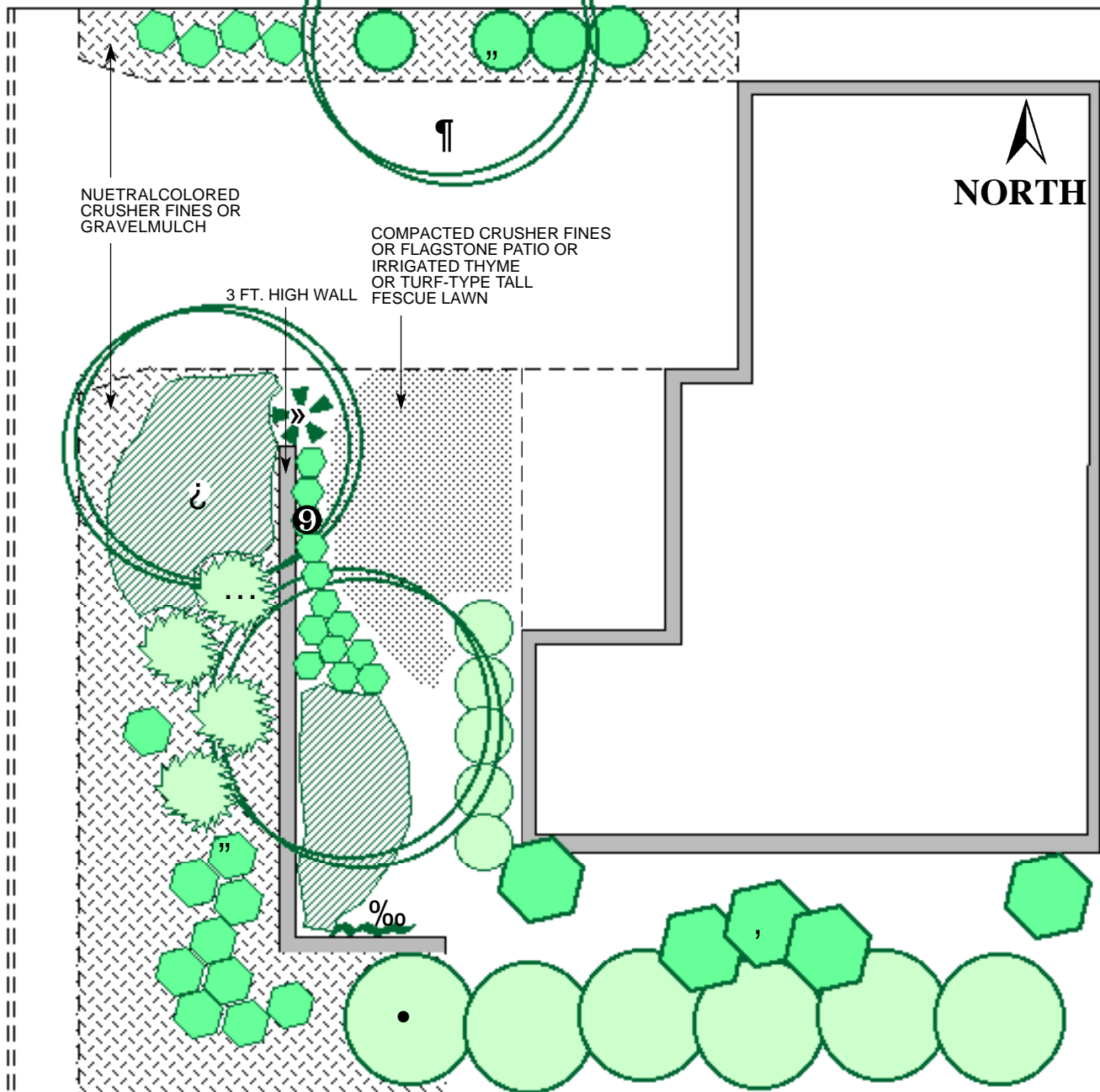


Greenscape

Evergreen Plants Provide an Ever-Beautiful Landscape

SCALE: 1" = 10'



Plant Legend

Trees

1. Escarpment Live Oak

Shrubs

2. Silverberry
3. Winter Jasmine
4. India Hawthorn
5. Desert Globemallow

Desert Accents & Succulents

6. Red Hesperaloe
7. Beargrass

Groundcovers

8. Coral Honeysuckle
9. Germander
10. Creeping Rosemary

Green spaces and water conservation need not conflict, nor does an oasis require the use of high water-use and high-maintenance turfgrass at the exclusion of native plants and succulents. This typical front yard area contains mostly evergreen plantings and an inviting entry experience welcoming guest and owner alike, no matter the season. A low wall and climbing evergreen vines combine to provide additional screening and intimacy for sitting out on the front porch while extending the architecture into the plantings. While designed for a smaller front area, the plantings can be increased in scale to fill a larger property.

The sculptural and leafy forms of an evergreen Escarpment Live Oak grouping provide canopy to the plantings below, which feature seasonal interest using native and adapted species. Native Beargrass provides a soft yet bold texture, as do the spiky flower stalks of Red Hesperaloe. The loose forms of the colorful Desert Globemallow massing provide pink-to-red flowers throughout much of the growing season. Germander and Trailing Rosemary generously fill in the ground surfaces with dark green color, fragrance and seasonal flowering. Durable materials prevail, while the plant spacing provides both screening from adjacent neighbors and ample room to access both sides of the home.

Designed by David Cristiani,
Quercus+SW

FOR MORE INFORMATION ON THIS AND OTHER LANDSCAPES, CONTACT:



City of Albuquerque
Public Works Department
Water Resources Division
Water Conservation Office
768-3655

768-2477 TTY, or Relay NM 1-800-659-8331
www address: <http://www.cabq.gov/resources/>

Common Name	Botanical Name	Approx. Height	Approx. Spread	Light Exposure	Water Use
Beargrass	Nolina texana	4'	65"	sun/shade	low
Coral Honeysuckle	Lonicera sempervirens	climbing	8'	sun/shade	medium
Creeping Germander	Teucrium chamaedrrys	12"	24"	sun/shade	medium
Creeping Rosemary	Rosmarinus officianalis 'Prostrata'	2'	6'	full sun	medium
Desert Globemallow	Sphaeralcea ambigua	18"	24"	full sun	low
Escarpment Live Oak	Quercus fusiformis	25'	30'	sun/shade	medium
India Hawthorn	Raphiolepis indica	3'	4'	sun/shade	medium
Red Yucca	Hesperaloe parviflora	3'	3'	sun/shade	medium
Silverberry	Elaeagnus pungens	10'	10'	full sun	medium
Winter Jasmine	Jasminum nudiflorum	4'	12'	full sun	low+