

# Wildscape

A Celebration of Wildlife  
in Your Landscape

SCALE: 1" = 10'

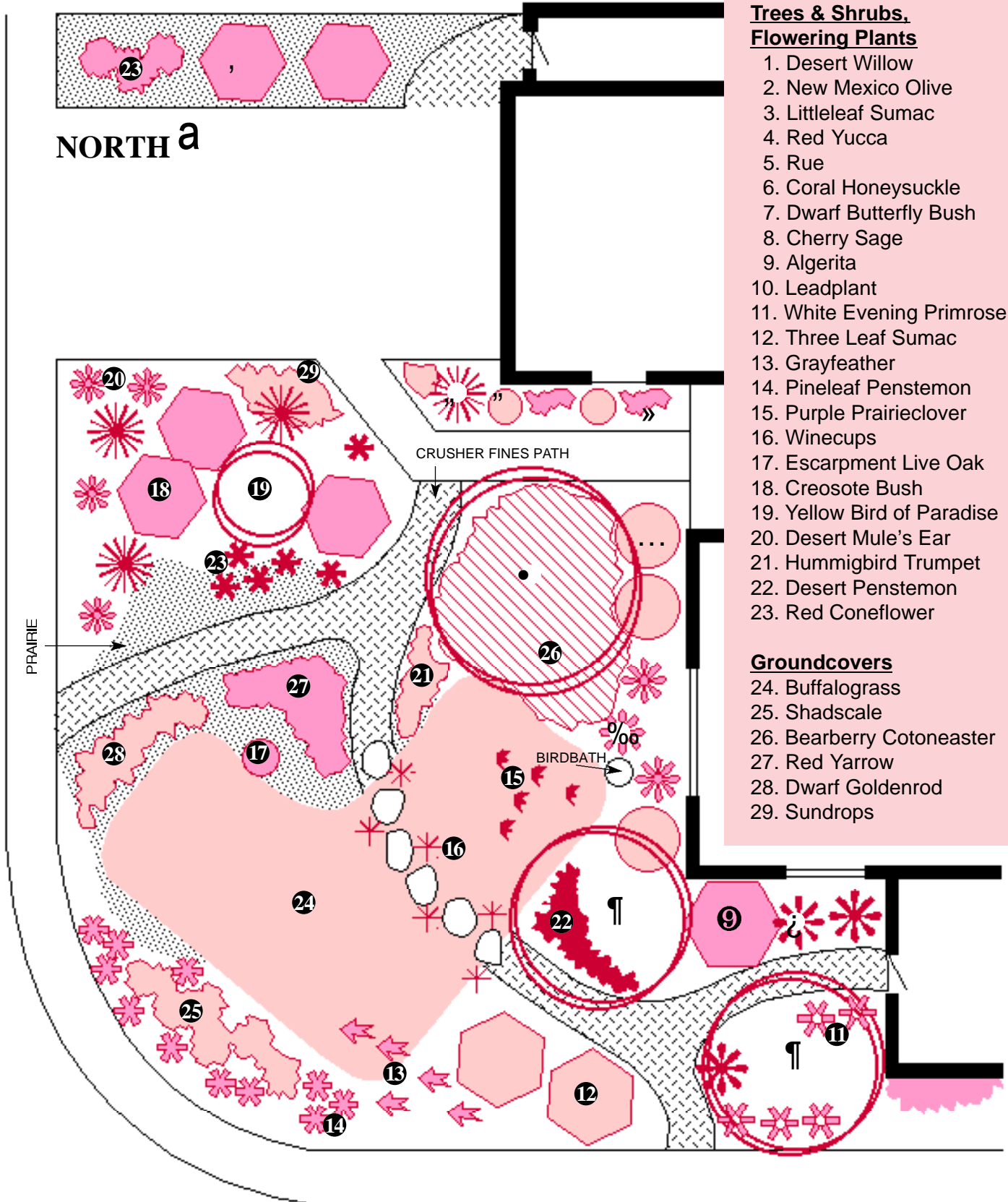
## Plant Legend

### Trees & Shrubs, Flowering Plants

1. Desert Willow
2. New Mexico Olive
3. Littleleaf Sumac
4. Red Yucca
5. Rue
6. Coral Honeysuckle
7. Dwarf Butterfly Bush
8. Cherry Sage
9. Algerita
10. Leadplant
11. White Evening Primrose
12. Three Leaf Sumac
13. Grayfeather
14. Pineleaf Penstemon
15. Purple Prairieclover
16. Winecups
17. Escarpment Live Oak
18. Creosote Bush
19. Yellow Bird of Paradise
20. Desert Mule's Ear
21. Hummingbird Trumpet
22. Desert Penstemon
23. Red Coneflower

### Groundcovers

24. Buffalograss
25. Shadscale
26. Bearberry Cotoneaster
27. Red Yarrow
28. Dwarf Goldenrod
29. Sundrops



**P**lant for wildlife and you will host a never-ending garden party. Wildscapes should have tiers of canopy to provide shelter and food for a wide variety of wildlife, including birds, hummingbirds, bees and butterflies. Tall trees provide shade and shelter. Dense thickets of middle-height shrubs provide spaces for roosting and nesting and also give the landscape a sense of enclosure. Open areas with low-growing groundcovers provide areas for nesting and foraging, and the colorful flowers and berries appeal to people as well as winged visitors. A mix of evergreen plants for cover, brilliant flowers for nectar and pollen, and fruits and seeds ripening through the seasons will keep your wildlife friends fat and happy.

In this Wildscape, the Gayfeather, Dwarf Goldenrod, Leadplant, Yarrow, Rue, Grasses and Dwarf Butterfly Bush are lures for butterflies. Hummingbirds are drawn to plants with nectar-rich tubular flowers, such as Desert Willow, Penstemons, Cherry Sage, Coral Honeysuckle and Red Yucca. Local songbirds and quail will be attracted by New Mexico Olive, Sumacs, Creosote Bush, Desert Mule's Ear, Coneflowers, Shadscale, Gayfeather and Algerita.

Designed by Judith Phillips,  
Bernardo Beach Native Plant Farm

**FOR MORE INFORMATION ON THIS AND OTHER LANDSCAPES, CONTACT:**



City of Albuquerque  
Public Works Department  
Water Resources Division  
Water Conservation Office  
768-3655

768-2477 TTY, or Relay NM 1-800-659-8331  
www address: <http://www.cabq.gov/resources/>

| Common Name                  | Botanical Name              | Approx. Height | Approx. Spread | Light Exposure | Water Use |
|------------------------------|-----------------------------|----------------|----------------|----------------|-----------|
| Algerita                     | Berberis haematocarpa       | 8'             | 10'            | full sun       | low+      |
| Bearberry                    | Cotoneaster dammeri         | 12"            | 9'             | sun/shade      | medium    |
| Blue Grama                   | Bouteloua gracilis          | 4-12"          | n/a            | full sun       | low+      |
| Buffalograss                 | Buchloe dactyloides         | 3-8"           | n/a            | full sun       | medium    |
| Coral Honeysuckle            | Lonicera sempervirens       | climbing       | 8'             | sun/shade      | medium    |
| Creosote Bush                | Larrea tridentata           | 6'             | 8'             | full sun       | low       |
| Desert Mule's Ear            | Wyethia scabra              | 2'             | 3'             | full sun       | low       |
| Desert Penstemon             | Penstemon pseudospectabilis | 3'             | 3'             | full sun       | low       |
| Desert Willow                | Chilopsis linearis          | 20'            | 25'            | full sun       | low       |
| Dwarf Butterfly Bush         | Buddleia davidii nanhoensis | 5'             | 5'             | sun/shade      | medium    |
| Dwarf Goldenrod              | Solidago hybrids            | 3'             | 3'             | sun/shade      | medium    |
| Escarpment Live Oak          | Quercus fusiformis          | 25'            | 30'            | sun/shade      | medium    |
| Gayfeather                   | Liatris punctata            | 3'             | 3'             | full sun       | low+      |
| Hummingbird Trumpet          | Anisacanthus thurberi       | 4'             | 4'             | sun/shade      | low+      |
| Leadplant                    | Amorpha canescens           | 2'             | 3'             | full sun       | low       |
| Littleleaf Sumac             | Rhus microphylla            | 8'             | 9'             | full sun       | low+      |
| Maximilian Sunflower         | Helianthus maximiliana      | 10'            | 10'            | full sun       | medium    |
| New Mexico Olive             | Forestiera neomexicana      | 15'            | 15'            | sun/shade      | medium    |
| Pineleaf Penstemon           | Penstemon pinifolius        | 12"            | 20"            | full sun       | low+      |
| Prairieclover                | Petalostemon purpureum      | 3'             | 3'             | full sun       | low+      |
| Red Coneflower (Mexican Hat) | Ratibida columnifera        | 32"            | 32"            | full sun       | low+      |
| Red Yarrow                   | Achillea millefolium        | 18"            | 24"            | sun/shade      | medium    |
| Red Yucca                    | Hesperaloe parviflora       | 3'             | 3'             | sun/shade      | medium    |
| Rue                          | Ruta graveolens             | 3'             | 3'             | full sun       | medium    |
| Shadscale                    | Atriplex confertifolia      | 2'             | 2'             | full sun       | low       |
| Sideoats Grama               | Bouteloua curtipendula      | 30"            | 24"            | full sun       | medium    |
| Sundrops                     | Calypso hartwegii           | 18"            | 18"            | full sun       | low       |
| Three Leaf Sumac             | Rhus trilobata              | 6'             | 6'             | full sun       | low+      |
| White Evening Primrose       | Oenothera caespitosa        | 12"            | 12"            | full sun       | low       |
| Winecups (Poppy Mallow)      | Callirhoe involucrate       | 24"            | 24"            | full sun       | low+      |
| Yellow Bird of Paradise      | Caesalpinia gilliesii       | 10'            | 10'            | full sun       | low       |